

# BARD: Better Automated Redistricting

Micah Altman  
Harvard University

Michael P. McDonald  
George Mason University  
Brookings Institution

---

## Abstract

**BARD** (Altman and McDonald 2011) is the first (and at time of writing, only) open source software package for general redistricting and redistricting analysis. **BARD** provides methods to create, display, compare, edit, automatically refine, evaluate, and profile political districting plans. **BARD** aims to provide a framework for scientific analysis of redistricting plans and to facilitate wider public participation in the creation of new plans.

**BARD** facilitates map creation and refinement through command-line, gui, and automatic methods. Since redistricting is a computationally complex partitioning problem not amenable to an exact optimization solution, **BARD** implements a variety of selectable metaheuristics that can be used to refine existing or randomly-generated redistricting plans based on user-determined criteria.

Furthermore, **BARD** supports automated generation of redistricting plans and profiling of plans by assigning different weights to various criteria, such as district compactness or equality of population. This functionality permits exploration of trade-offs among criteria. The intent of a redistricting authority may be explored by examining these trade-offs and inferring which reasonably observable plans were not adopted.

Redistricting is a computationally-intensive problem for even modest-sized states. Performance is thus an important consideration in **BARD**'s design and implementation. The program implements performance enhancements such as evaluation caching, explicit memory management, and distributed computing across **snw** clusters.

*Keywords:* redistricting, optimization.

---

## 1. Introduction

Legislative redistricting is among the most politically charged tasks in American politics. District lines affect which political party wins control of a legislative body, the reelection success of incumbents, and election of minority preferred candidates.

In the 1960s, after the US Supreme Court's landmark decisions requiring equal population in districts, scholars envisioned taking politics out of redistricting by programming computers to automatically draw districts (Vickrey 1961; Weaver and Hess 1963; Nagel 1965). These scholars reasoned that an algorithm implementing politics-blind criteria would draw districts neutral to politics.

Automated redistricting programs were developed, and special purpose software was developed, and even freely distributed (see, for example Nagel 1965) for this purpose, but the problem was too computationally difficult to solve practically. Instead, computers were found to be well-suited to assist human planners in processing the large amounts of population,

election, and geo-spatial redistricting data. And it was out of this use that some of the first Geographic Information Systems (GIS) were born ([Altman, MacDonald, and McDonald 2005](#)).

Unfortunately, early computerized redistricting systems were prohibitively expensive to all but state governments or political parties, effectively shutting out the public from the redistricting process. Computer hardware and specialized redistricting GIS software have since become more affordable. However, specialized software packages for redistricting still remain unusually expensive – costing thousands of dollars. We aim to make the redistricting process more open, by offering the first open-source general redistricting software. We call our computer program **BARD** for better automated redistricting.<sup>1</sup>

Our package permits users to draw and compare redistricting ‘plans’.<sup>2</sup> Our package also permits users to evaluate whether these meet legal requirements, and measure their potential political consequences. The system is open and extendable, so that anyone can add a wide variety of built-in measures, or add any they desire, to evaluate plans. **BARD** is not only the first *open source* package for general redistricting analysis, it is also the first publicly available redistricting package to support multi-criteria optimization for redistricting plans.

## 2. Redistricting with BARD

Currently **BARD** provides functionality in multiple areas, and the implementation of the **BARD** system is divided into separate independent modules to facilitate maintenance and flexibility.

Figure 1 illustrates these areas, and the typical phases of redistricting in **BARD**.

First, **BARD** reads and processes redistricting data. It can read and write files representing redistricting plans in the standard Esri “shapefile” format, permitting inter-operability with other GIS packages. Inter-operability is desirable since, while **BARD** has some rudimentary functionality for basic interactive map drawing, existing commercial GIS software has more sophisticated manual map-drawing tools and Graphical User Interfaces (GUI’s). Furthermore, we hope that a redistricting authority will consider a plan drawn with the aid of **BARD**, which necessarily requires map export functionality. Like these other GIS programs, additional demographic and political data can be imported into **BARD** that may be essential for evaluation.<sup>3</sup>

Second, **BARD** evaluates redistricting plans. It will generate textual and graphical reports for a single plan or comparison of multiple plans. Currently **BARD** shows precinct-level differences between pairs of plans, counts ‘holes’ in plans, computes common compactness scores, calculates overall population deviation, and checks for contiguity. It computes many common political measures, such as number of majority-minority districts, plan competitiveness, etc. Since **BARD** is built on R ([R Development Core Team 2011](#)), evaluation is extensible to any scoring method that can be programmed into R.

---

<sup>1</sup>Tolkien fans may recognize the reference to the slayer of the dragon Smaug, perhaps the most terrible of salamanders.

<sup>2</sup>A plan consists of a geographic map of some administrative unit, such as census tracts or counties, along with political and demographic measurements for each unit, and an assignment of those units to a set of districts.

<sup>3</sup>At this stage **BARD** also generates a contiguity analysis of maps in preparation for later manipulation.

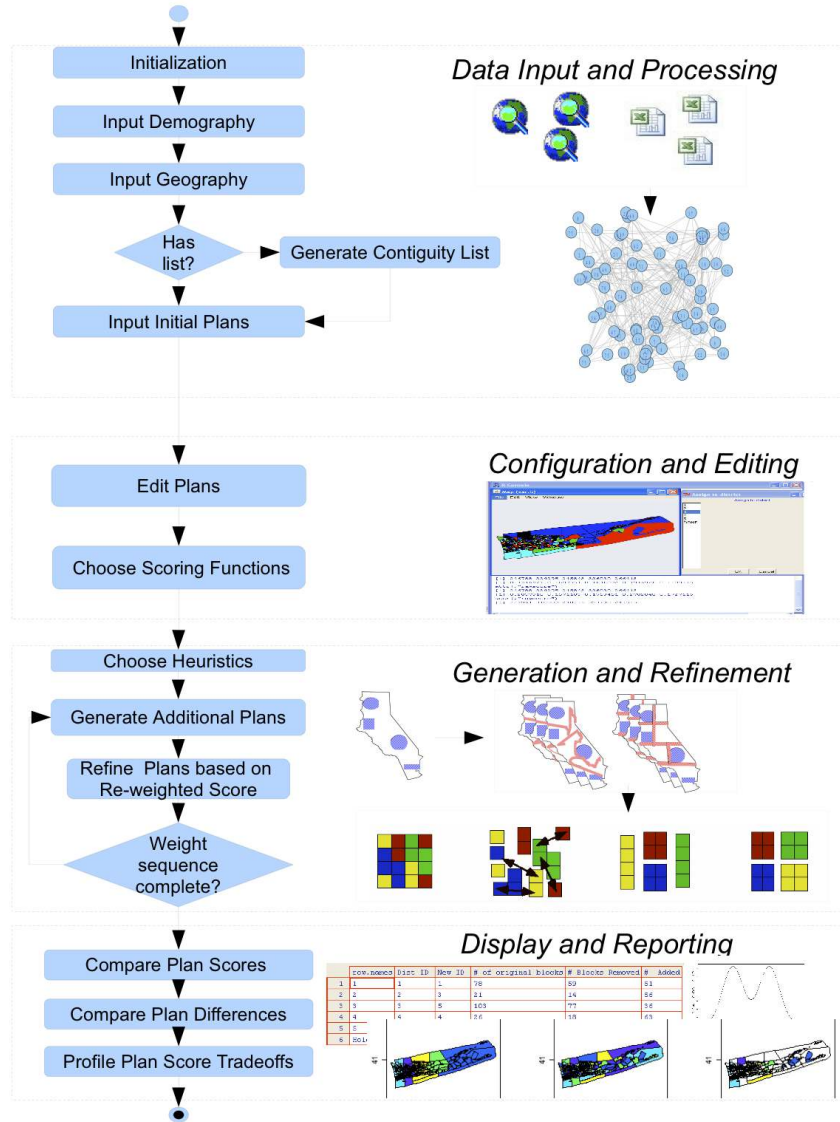


Figure 1: Phases of redistricting in BARD

Third, **BARD** *generates* and *refines* districting plans. Plans can be automatically generated to use as starting points in further refinement, or evaluated in their own right. A user may also choose to start refinement from pre-existing plans (e.g., chosen by the legislature, or offered by a public interest group), if available. We provide a number of different procedures for automatically generating plans including plans for pure random generation of districts (e.g., as described in [Grofman 1982](#)), random-walk based methods for generating contiguous equi-populous districts, including methods described in [Cirincione, Darling, and O'Rourke \(2000\)](#), and both simple and weighted  $k$ -means based plan generation. Once generated (or provided), plans may be automatically refined using metaheuristics discussed below to meet

chosen goals. The application of a metaheuristic to refine plans should yield a plan that is an improvement, given a chosen scoring formula.

The third phase may vary in some important ways, depending on a user’s intended use of the program. For pure applied redistricting, the generation step is omitted and refinement is used to improve existing redistricting plans. For ‘random’ redistricting analysis, such as to probe the characteristics of arbitrary redistricting plans (see (see Engstrom and Wildgen 1977; Rossiter and Johnston 1981; O’Loughlin 1982; Grofman 1982; Cirincione *et al.* 2000), generation may be used without refinement, or with refinement only to absolute legal requirements. Analysis of legal constraints on redistricting, as in Altman (1997) and Rogerson and Yang (1999), may involve repeated generation and refinement. **BARD** further supports automated re-weighting of a score function to generate a profile of how one redistricting criterion changes as another is optimized and in this manner it will automatically generate profiles of plans that explore tradeoffs among redistricting criteria. (This is computationally expensive, thus **BARD** supports distributing these calculations across a computing cluster.)

Fourth, **BARD** compares multiple plans. It outputs the range of overall scores, the range of scores for each component, the differences among plans, and the correlations among score components. Candidate plans may also be contrasted with the starting plans if meaningful pre-existing starting points are selected. This analysis phase can be used to probe redistricting trade-offs – to what extent attempting to improve plans based on one criterion necessarily reduces performance on other criteria.

### 3. Using **BARD** for plan evaluation and modification

This section demonstrates some of the basic redistricting functions in **BARD**. These functions permit users to load existing plans into **BARD** or instruct the program to automatically generate a quasi-random map, permit users to manually edit plans, and report plan comparisons. In the next section we introduce the mathematical basis for these functions and the more complex metaheuristics used to optimize redistricting plans.

This command loads the **BARD** package:

```
R> library("BARD")
```

This command imports a standard “shapefile” into **BARD** which will be used as the base map. The file contains the coordinates of the outlines of all geographical units (the smallest of which in the United States context are known as ‘census blocks’) along with any political and demographic variables in each unit. Our example dataset describes Suffolk County, New York. Optionally, a user can supply a variable in this file that indicates the district to which each unit is currently assigned, thereby enabling evaluation of existing plans.

```
R> suffolk.map <- importBardShape(file.path(system.file("shapefiles",
+ package = "BARD"), "suffolk_tracts"))
```

These commands illustrate are several **BARD** functions that create “random” redistricting plans:

- **createRandomPlan**: Uses pure random assignment.

- `createRandomPopPlan`: Uses pure random assignment until a district reaches a target population threshold.
- `createKmeansPlan`: Uses kmeans on geographical district centroids.
- `createWeightedKmeansPlan`: Weights kmeans by a variable, such as population.
- `createContiguousPlan`: Attempts to create contiguous plans through the random-walk method of [Cirincione \*et al.\* \(2000\)](#).

More information on these functions is included in the documentation accompanying the package.

Two of these functions are illustrated below:

```
R> kplan <- createKmeansPlan(suffolk.map, 5)
R> rplan <- createRandomPlan(suffolk.map, 5)
```

The results of these are preliminary assignments of geographic units to districts – the assignments will need to be refined extensively in most cases to yield a legal plan.

**BARD** supports simple plotting of plans as well:

```
R> plot(kplan, col = colorRampPalette(c("red", "grey"))(5),
+      axes = FALSE)
```

The output is shown in [Figure2](#).

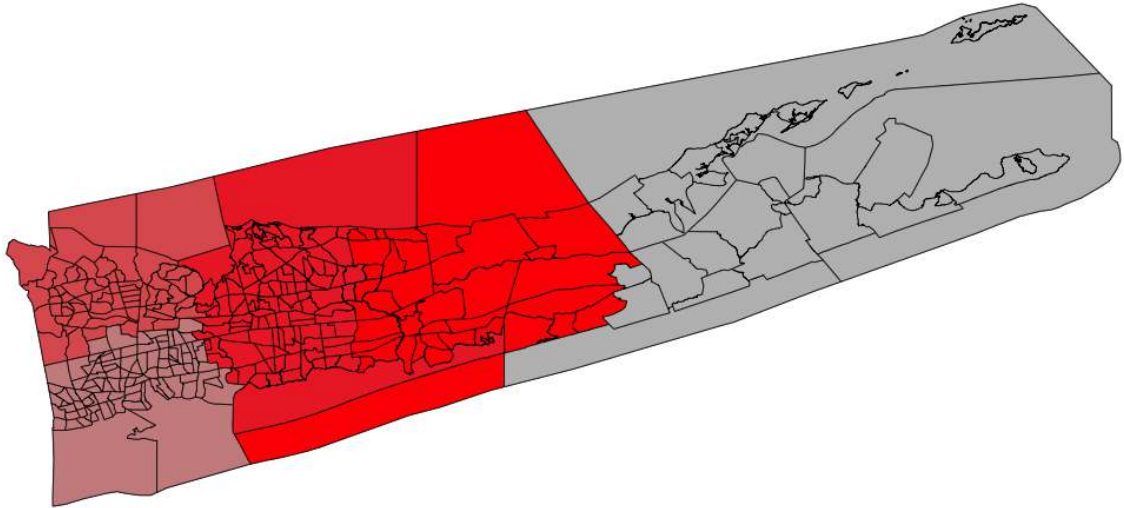
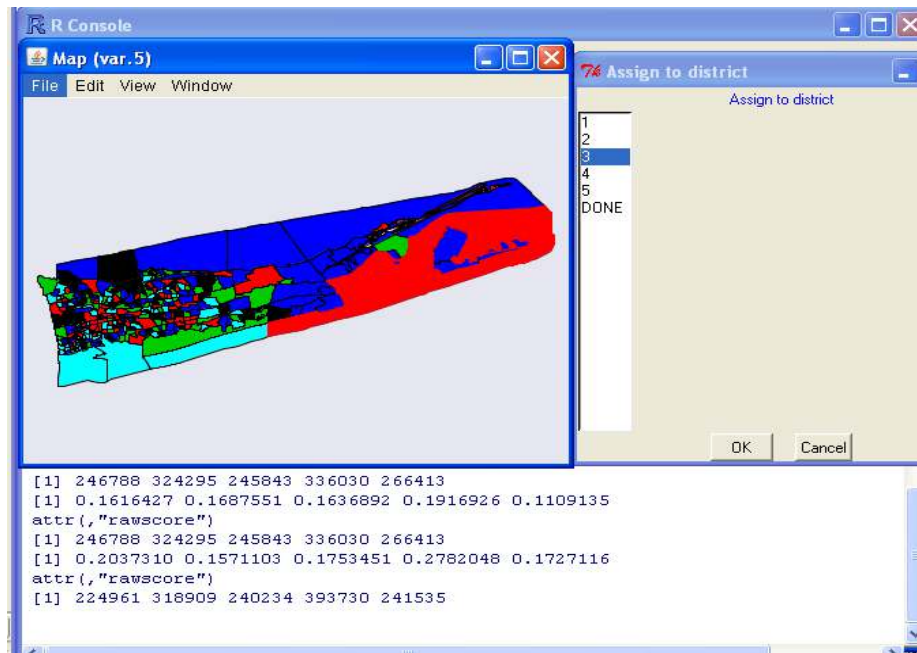


Figure 2: Plotting a sample plan

In addition to plan generation, **BARD** supports basic interactive editing of plans (here, by reassigning census blocks among districts).

The interactive map generation interface is illustrated in Figure [3](#).

Figure 3: Interactive creation of districts with **BARD**.

Furthermore, **BARD** generates reports for plans based on built-in or user-supplied redistricting criteria, as described in the next section. Here is another brief example:

```
R> reportPlans(plans = list(kmeans = kplan, random1 = rplan))
```

#### Plan Scores

	Plan	DistrictID	OriginalID	Contiguity	Holes	LW	Compact	Reock
1	kmeans	1	1	0.000	NA		0.1328	0.648
2	kmeans	2	2	0.000	NA		0.0739	0.543
3	kmeans	3	3	0.000	NA		0.1524	0.504
4	kmeans	4	4	0.000	NA		0.0875	0.388
5	kmeans	5	5	0.000	NA		0.3779	0.662
6	kmeans	Total	Total	0.000	0		0.8245	2.745
7	random1	1	5	0.971	NA		0.6588	0.925
8	random1	2	3	0.960	NA		0.5371	0.878
9	random1	3	4	0.974	NA		0.5967	0.968
10	random1	4	1	0.957	NA		0.7072	0.954
11	random1	5	2	0.958	NA		0.5090	0.930
12	random1	Total	Total	4.821	0		3.0088	4.655

#### Plan Differences

Comparing plan kmeans with plan random1 :

	Dist	ID	Original	ID	# of original blocks	# Blocks Removed
1		1		5	39	27
2		2		3	103	79
3		3		4	64	54
4		4		1	93	72
5		5		2	21	20
Holes		NA		NA	0	0
	#	Added	% Shared			
1		61	12.00			
2		55	15.20			
3		51	8.70			
4		42	15.60			
5		43	1.56			
Holes		0	NA			

This report compares a set of plans and can report differences in aggregate scores, differences in district level scores, and differences in census unit assignments between districts.

For reporting, **BARD** accepts user-generated score functions, which are discussed below. Additional plotting and reporting options are available and described in detail in the accompanying documentation.

The differences between districts can be plotted, using a basic plot function. Here, identify

areas in which two plans overlap:

```
R> plot(diff(kplan, rplan), plotall = TRUE, col = colorRampPalette(c("red",
+ "grey"))(5), axes = FALSE, horizontal = FALSE)
```

The output is shown in Figure 4.

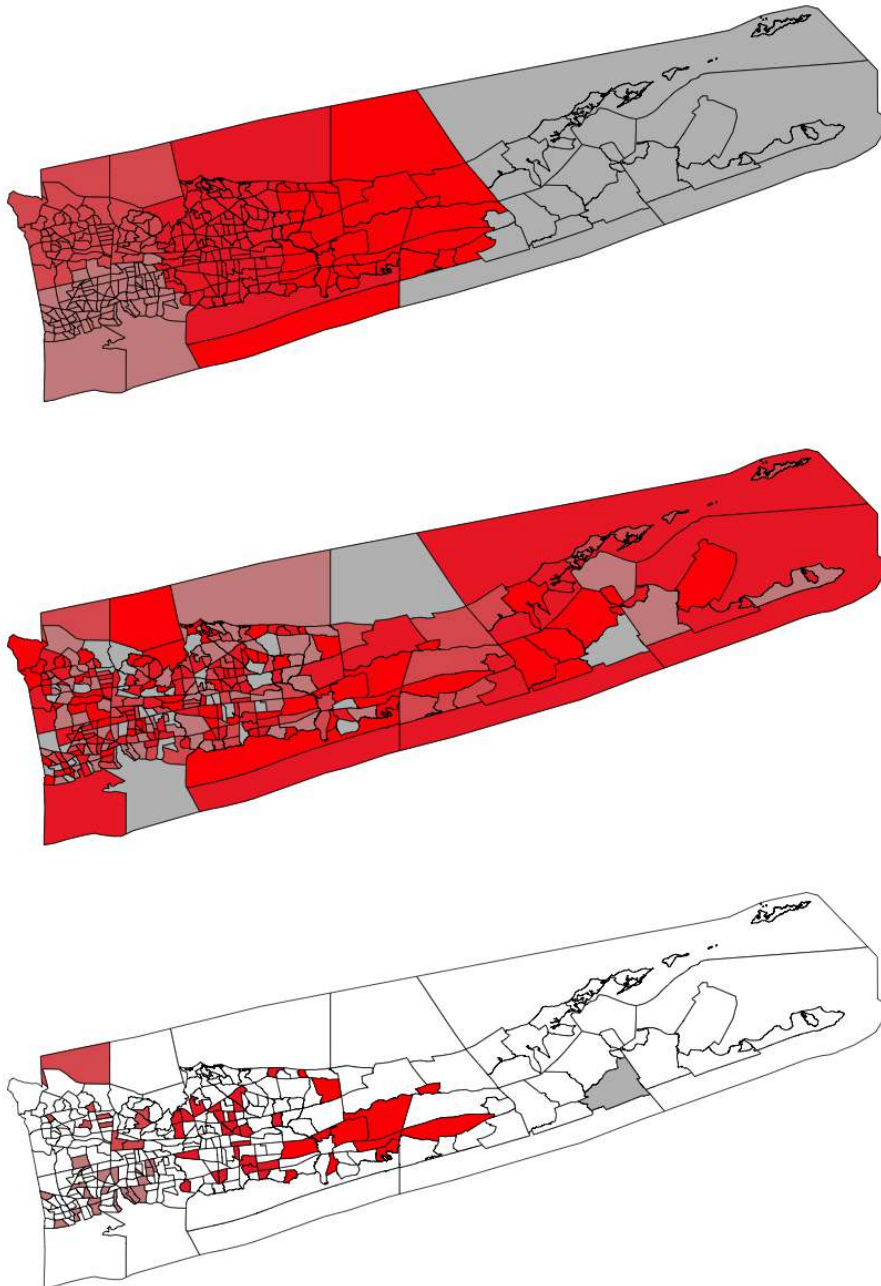


Figure 4: Plotting differences among plans

## 4. A mathematical formulation of redistricting criteria

When redistricting authorities draw district boundaries they do not simply take pen to paper (or mouse to mousepad).<sup>4</sup> They also analyze information associated with the geographic components of districts to ensure that maps satisfy legal requirements and political realities. To solve redistricting problems with a computer, the analogous mathematical problem must be formalized. Since redistricting intrinsically involves assigning discrete blocks of geography (or discrete individuals) to districts to achieve a set of goals that is a function of the redistricting plan as a whole, the corresponding mathematical problem thus falls into the general area of combinatoric optimization.<sup>5</sup>

There are many ways to represent particular redistricting problems mathematically within the general combinatoric optimization framework (Altman 1997). However, representing redistricting as a *graph partitioning* problem is the most natural formulation, since it allows the expression of geographic values, such as compactness and contiguity in a simple and direct way. Furthermore, in previous research, this representation seems to be the most amenable to an efficient solution.<sup>6</sup>

To put the problem in formal terms<sup>7</sup>:

1. Let  $\mathbf{x}_i$  refer to the  $i^{\text{th}}$  census block,  $x_i \in \mathbf{X}$  where  $\mathbf{X}$  is the set of all census blocks in a jurisdiction. These blocks are vector-valued, and we will assume that blocks are associated to various population values, political measures, and geographic locations, among other features.  $\mathbf{d}_j$  refers to the  $j^{\text{th}}$  district. A district is a set of census blocks:

$$\mathbf{d}_m = \{\mathbf{x}_i, \mathbf{x}_{i'}, \dots, \mathbf{x}_{i''}\}$$

2.  $\mathbf{p}_k$  refers to a particular plan. plan is a partition of the set of all census blocks  $\mathbf{X}$  into a disjoint set of districts of exogenously given size  $n$ , such that  $\mathbf{X} = \bigcup_{\forall j} \mathbf{d}_j$  and

---

<sup>4</sup>Prior to redistricting, another process of *reapportionment* is used to determine the number of districts to be drawn. We do not address reapportionment algorithms here. For more information see Balinski and Young (2001)

<sup>5</sup>Generically, this formulation of the problem assumes that the fundamental units are indivisible. If units are divisible, the problem becomes a continuous optimization problem, and different approaches would apply. In practice, reaggregating census geography is difficult and uncertain (see, for example King, Palmquist, Adams, Altman, Benoit, Gay, Mayer, and Reinhardt 1997) the lowest level census geography is treated as indivisible in redistricting, with the rare exception of 'split blocks.' Blocks can be manually split, and BARD can proceed with plan evaluation and generation if a shapefile is generated that includes geographical representations of split blocks. Our software simply treats the input units as given – so 'split blocks' can be included in the input data, although the software will not split blocks automatically.

<sup>6</sup>Less commonly, set-partitioning and integer programming approaches have been used to solve the redistricting problem. These are mathematically equivalent, although incorporating contiguity requires that a large number of side constraints be enumerated in formulating each problem instance. Also, geographic site-selection and facility allocation problems (as found in the operations research literature) are related to the redistricting problem, but no method is available currently to reformulate arbitrary redistricting problems in these terms. In terms of fundamental computational complexity, the particular problem representation is less important, since one could convert a redistricting problem instance back and forth among any different NP-complete problem representation in polynomial time. However, in practice, a proper choice of representation can make it much easier to formulate and solve the problem. In recent work, integer programming approaches have been successful in small problems (see Aerts, Eisinger, Heuvelink, and Stewart 2003), whereas success for much larger problems has been reported using heuristics on graphs (see Xiao 2006)

<sup>7</sup>For consistency, we use the notation previously published in Altman (1997) and Altman (1998a)

$$\mathbf{d}_j \cap_{\forall \{j,j'\}, j \neq j'} \mathbf{d}_{j'} = \emptyset^8$$

$$\mathbf{p}_i = \{\mathbf{d}_1, \dots, \mathbf{d}_n\}$$

3.  $\mathbf{G} = (\mathbf{V}, \mathbf{E})$  is a mathematical graph representing the underlying census block geography. Each node  $\mathbf{v}_i$  in  $\mathbf{g}$  represents a census block, and each edge  $\mathbf{e}_{i,j}$  denotes physical adjacency of those block

#### 4.1. Redistricting criteria

Part of solving this problem is operationalizing the criteria important for districting as functions of the demographic, political, and geographical properties of the redistricting plan. Here we discuss the most commonly recognized redistricting criteria (see McDonald 2004), all of which can be easily calculated using score functions provided with **BARD**: equal population, completeness, contiguity, geographic compactness, political competitiveness or partisan bias, minority-opportunity to elect a candidate of choice, and respect for existing political boundaries or communities of interest.<sup>9</sup>

Perhaps the most important criterion is that districts have equal population.<sup>10</sup> And the format of population data released by the US Census Bureau further guides how the redistricting problem is formalized. These data are not reported for individuals, rather, to protect the confidentiality of respondents data, these are aggregated into discrete geographic entities known as “census blocks” which roughly conform to a city block in urban areas. It is thus not difficult to imagine census blocks as corresponding to points on a graph.

This conceptualization is how GIS programs generally work: they plot the vertices of census blocks (and higher geographic units, such as counties and cities) onto a screen for user manipulation. GIS redistricting modules enable users to assign blocks to districts through simple point and click operations. Characteristic data associated with each block can be displayed on-screen. For example, in the case of equal population requirements, blocks can be associated with their total population. If a district needs more population, a user can click on blocks adjacent to a district to identify those that will help meet a target population number. GIS programs are well-suited to display and produce summary statistics of similar data, such as racial population data, which are used to meet target racial population numbers to conform

<sup>8</sup>A very small number of state and local jurisdictions permit overlapping “floterial” districts, which permit the assignment of units (typically towns or municipalities) to more than one district – thus allowing voters in those municipalities to vote in multiple districts simultaneously. BARD does not provide direct support for this situation. In practice, this is often approached as a set of sequential partitioning problems: First partition the towns into  $n - m$  districts. Then create a separate overlay partition of  $m$  districts, using only ‘underrepresented’ towns. This sequential problem formulation could be solved using BARD, by removing ineligible units from the base map in the second stage.

<sup>9</sup>Formally, required criteria for any legal redistricting plans, such as compactness, may be thought of as constraints rather than scores. In general in **BARD**, these constraints are treated as a very heavily valued component of the score function, thereby permitting the use of a variety of generalized optimization heuristics. However, a few (optional) specialized functions in **BARD**, such as the “contiguous” plan generation function, has one or more constraints “hard-wired” into the generation or refinement processes.

<sup>10</sup>Congressional districts must be of less than a one percent population deviation to ensure that they conform to legal standards. State legislative districts are permitted a ten percent population deviation under federal law, though some state laws require a smaller deviation (Cain, Donald, and McDonald 2006). In our software, both the score function for measuring population deviation, and the methods for generating initial district assignments allow the amount of tolerable deviation in population to be specified by the user.

with the Voting Rights Act, and election data, which are used to predict political outcomes. (Indeed, we might think of all such characteristic block data as belonging to the same family for optimization purposes.) However, GIS modules do not assure that the districts created in this way conform to criteria such as equal population, only that these data are available to map drawers.

Part of the definition of a legal redistricting plan is that it is a complete assignment of census blocks to districts. Thus completeness is not usually discussed explicitly as a redistricting criterion. Nevertheless, in practice, because of the technical complexity of redistricting, even professionals often commit errors leading to incomplete plans. To assist the creation of legal plans, **BARD** can evaluate the completeness of the proposed plan, and to repair “holes” in it.

Another important criterion is that districts must (usually) be contiguous, or connected.<sup>11</sup> The geospatial coordinate data used to plot census blocks can also be used to determine if two blocks are connected to one another. In normal operation, block boundaries are pre-processed to generate a complete contiguity matrix that lists every block’s neighbors which **BARD** then uses to determine rapidly if a proposed plan satisfies contiguity.

Geographic compactness is an oft-mentioned criterion for redistricting that is honored in the breach. Dozens of scores have been proposed, but few are used in practice (see [Altman 1998b](#); [Niemi, Grofman, Carlucci, and Hofeller 1991](#)). **BARD** provides three functions that calculate common geographic compactness scores which capture the dispersion and dissection of districts (how much they are stretched or have chunks removed from them). It also provides a parameterized and weighted ‘moment-of-inertia’ score that can be used to measure geographic compactness, population compactness, and cumulative distance from fixed locations, such as candidates homes, warehouses, or schools. Other scores can easily be programmed in R.

Election outcomes that may be expected from a redistricting plan can be constructed from election or demographic input variables. Estimates of how reliably districts may elect partisan candidates of either party are commonly measured by estimating the expected partisan vote share in each districts ([McDonald 2006](#)).<sup>12</sup> If the expected ratio of partisan vote shares is approximately the same within a threshold tolerance, a district is deemed competitive by this measure. In a similar manner, minority opportunity districts are usually identified as those in which the ratio of minority population to majority population falls above a designated threshold ([Grofman, Handley, and Niemi 1992](#)). These partisan or racial vote share may be estimated simply, based on voter registration in the proposed district, or through a more complex model such as in [Gelman and King \(1994\)](#). The **BARD** framework provides a generalized scoring function that efficiently computes the sum of a predictor variable associated with each block, or the ratio of two predictive variables. With this it is possible to calculate estimates of the number of districts that may be won by a party’s candidates, district competitiveness

---

<sup>11</sup>While contiguity is a legal requirement in many states, it is not a Federal requirement. And there are documented instances of non-contiguous districts or districts of questionable contiguity because they are connected over water without a bridge ([Altman 1998b](#)). Another example, some states require districts to be composed entirely of wards or other political subdivisions which are themselves sometimes non-contiguous when odd city boundaries create islands of incorporated or unincorporated territory. The Wisconsin 61<sup>st</sup> Assembly district created in 2001 is non-contiguous as a result of containing such a ward on its perimeter. To avoid having non-contiguous districts, the state created a legal fiction that states all wards are contiguous, see Wisconsin Code 5.15(1)(b)

<sup>12</sup>An alternative way of evaluating the political outcomes of the plan involve estimating the predicted seat-votes curve resulting from that plan. This was proposed thirty years ago by [Tufte \(1973\)](#) and [Niemi and Deegan \(1978\)](#). [Gelman and King \(1994\)](#) provide the leading method for estimating this.

scores, identify minority-opportunity districts, or other predictive election results.

Another quasi-geographic set of criteria often found in state law is ‘respect’ for geographic or political features such as city or county boundaries, communities of interest (often defined by redistricting authorities), or other ‘natural’ features such as rivers or mountain ranges. Capturing these criteria mathematically is straight-forward: any set of census blocks can be defined as belonging to a grouping set and a penalty for splitting groups can be added to the score function for evaluating a redistricting plan.<sup>13</sup>

An example of this type of community cost function is included in the **BARD** package. The twist is that these criteria are often secondary to equal population, contiguity, and Voting Rights Act concerns, and so the scores associated with each criterion must be properly weighted in order to permit some violation of feature boundaries to accommodate superseding criteria. All of these criteria may be calculated in **BARD**.

In addition, the **BARD** score framework enables any function of model in R to be used in the evaluation of a plan. Thus, it is relatively straightforward to add new scores to **BARD** to evaluate plans based on the user’s choice of statistical model.

We note that there is no universally agreed upon set of redistricting criteria, and many jurisdictions often require vague goals such as “compact” districts, without a specific definition to guide implementation. For example, is compactness defined as the minimization of the length of the district perimeter or the ratio of the district’s area to that of the largest inscribed circle (both are proposed methods of measuring compactness)? Different formulations may lead to substantively different types of districts, which means that redistricting criteria may have subtle “second-order biases” (Parker 1990), that is, the criteria are seemingly neutral on face value but reliably produce a political outcome. Defining criteria and meaningfully weighing them against one another is an art that demands experimentation since no two jurisdictions have the same geography or population distribution. This also reveals the importance of the **BARD** open source approach to formulating redistricting criteria (and automation) since a black box approach is vulnerable to hidden manipulation.

## 5. Use of automated redistricting for plan analysis

In addition to evaluating and improving existing plans, automated redistricting has long been used as a method for redistricting analysis, especially by political geographers. Pioneering work by Jenkins and Shepherd (1973) and Gudgin and Taylor (1979) employ enumeration of all possible partitions (for extremely small districting plans) to reveal the complete range of possible redistricting alternatives.

Scholars have proposed methods other than full enumeration to overcome the computational limitations of enumeration on even modestly redistricting problems, with as little as 50 units to assign to districts. Another way of using automated redistricting for analysis is taken by Altman (1997) and Rogerson and Yang (1999). These authors propose automated refinement of redistricting plans to simulate the effects of additional legal constraints on redistricting outcomes. Another alternative, and relatively common use of automated redistricting, is

---

<sup>13</sup>We are sympathetic to the argument put forth by Forest (2004) that using only quantitative data to represent communities of interest can result in ‘thin’ representations of community. Using the technique just described, the **BARD** system can incorporate information about the boundaries of communities of interest based on external qualitative analysis and “thick” descriptions.

to use “random” generation of districts to probe the characteristics of arbitrary redistricting plans (see Engstrom and Wildgen 1977; Rossiter and Johnston 1981; O’Loughlin 1982; Grofman 1982; Cirincione *et al.* 2000). Note however that work does not establish that ‘random’ districts are probability samples from a well-described population of plans (Altman and McDonald 2004).<sup>14</sup> We recommend that these methods be interpreted with caution.

## 6. Improving algorithms for automated redistricting refinement

The **BARD** package provides functions to refine districts based on specified score functions. In this section we describe the formulation of the refinement problem, existing software, and the algorithms **BARD** currently provides.

Formally, redistricting is a computationally complex optimization problem: Common variations of redistricting be shown to be equivalent to general optimization problems already known to be ‘NP-Complete’ (see Altman 1997). An illustration of this is the specific problem of finding equi-populous contiguous plans. Formally, this is equivalent to the the following optimization problem, known as “**Cut into Connected Components of Bounded Size (& Weight)**” (Johnson 1982):

*Is there a partition of vertices,  $\mathbf{V}$ , into disjoint sets  $\mathbf{V}_1$  and  $\mathbf{V}_2$  such that*

$$\sum_{v \in \mathbf{V}_1} s(v) \leq K$$

and

$$\sum_{v \in \mathbf{V}_2} s(v) \leq K$$

*and both  $\mathbf{V}_1$  and  $\mathbf{V}_2$  induce connected subgraphs of  $\mathbf{G}$ ?*

For very small numbers of vertices, the optimal plan could be selected simply by enumerating all feasible redistricting plans and identifying the most optimal plan. Unfortunately, for the task of redistricting a state’s congressional or state legislative districts, no algorithm is guaranteed success in a reasonable time. Consider a middle-sized state such as Wisconsin, which has slightly more than 330,000 census blocks. If blocks were of equal population, then there would be more possible redistricting plans than there are quarks in the universe. More generally, the number of possible districts for a given number of equi-populous blocks and districts is a Stirling Number of the Second Kind:

$$S(n, r) = \frac{1}{r!} \sum_{i=0}^r \left[ (-1)^r (r-i)^n \frac{r!}{(r-i)!i!} \right]$$

In practice, contiguity will reduce the number of feasible plans that must be enumerated, none-the-less, the number of possible plans likely remains staggeringly large. Thus, selecting the globally optimal plan from a full enumeration of all plans is not feasible even using the fastest computers currently available. For similar reasons, random generation of districting plans (e.g., via a random walk) is unlikely to generate feasible plans.

<sup>14</sup>For example, Cirincione *et al.* (2000) use a random-walk like method to create contiguous districts. However, the process can be shown not to yield a simple random sample of redistricting plans in small samples, and indeed there is no evidence to establish convergence to a probability sample. In general, as Knuth warns, algorithms that are stochastic do not necessarily yield random distributions of results (Knuth 1997).

Lacking enumeration, some sort of heuristic or algorithm is needed to find an optimal redistricting plan. The fact that the problem has been shown to be NP-Complete strongly suggests that there are no efficient algorithms capable of solving the problem with any guaranteed approximation of optimality. Thus researchers in this area have turned to heuristic approaches, that while not guaranteed to produce quality solutions, do complete in a reasonable amount of time.

A variant on simple random block assignment is a “greedy” heuristic that starts from a seed block and randomly assigns additional contiguous blocks to a district until a target population value is reached. Perhaps a greedy algorithm could find an optimal redistricting plan if there was one clear path to the optimal plan. Upon reflection, this is unlikely to work for most redistricting problems. For example, imagine a state must draw a district with more than a majority percentage of minorities (so called “minority-majority” districts) to be in compliance with the Voting Rights Act. Imagine that there are two sizable minority communities separated by a white suburb. The only feasible minority-majority district is one that links the communities by a narrow bridge across the suburb. A greedy algorithm aimed towards maximizing district minority population might easily miss this arrangement because drawing a bridge across the white community would momentarily decrease the value of the objective function to be maximized until the bridge was complete. In general, partitioning problems such as the redistricting problem are known to be rife with local optima that trap greedy approaches.<sup>15</sup>

## 6.1. Available software

Despite a long history of experiments in automated redistricting, there are few tools publicly available for automated redistricting. To our knowledge, five commercial software tools produced by Caliper Corporation, Esri, Digital Engineering Corporation (which provides a redistricting add-on for Esri’s GIS program), Corona Solutions, and Manifold Systems provide automated redistricting functionality (Altman *et al.* 2005).<sup>16</sup>

All publicly available tools are limited in several regards. They are capable only of producing districts with equal population and have no means to accommodate other criteria necessary to produce legal plans. All but one program uses variations on steepest ascent heuristics, the exception is Corona Solutions which claims to use a single-criterion genetic algorithm. Unfortunately, we do not know much about the internal workings of these programs since they are closed-source and their algorithmic details poorly documented, which raises transparency issues similar to the controversies surrounding electronic voting machines. These redistricting GIS programs with automated algorithms typically cost several thousand dollars (Manifold being the single notable exception), limiting their wide use.

In our testing of these programs (see Altman *et al.* 2005), we found that while they could generate plans of a sort automatically, these plans would not satisfy legal requirements or basic plausibility. For example, Esri’s automated redistricting algorithm stops growing districts when the growing circular districts touch, yielding polka-dot districts that leave much of a

<sup>15</sup>Note that the final target of the heuristic must be generation of a plan. Since the allocation of one district affects others in the same plan, heuristics that take a district-by-district approach are even more prone to being trapped at local optima.

<sup>16</sup>In addition to these companies, the Texas Legislative Council developed prior to the 2001 round of redistricting a promising in-house automated redistricting program known as **TARGET** with limited exploratory capabilities.

jurisdiction unassigned to any district. Manifold’s algorithm apparently randomly selects a number of blocks equal to the number of districts as seeds and grows districts from these seeds one district at a time, thereby sometimes producing a single-block district when other districts are first grown around it.

Moreover, these programs are limited to balancing the allocation of a single fixed variable (measured at the unit level), sometimes in combination with a built-in (and usually idiosyncratic) measure of compactness, using a single optimization methods. These programs cannot perform multi-criteria optimization, accept user-defined weights and score functions, use alternative definitions of compactness, or probe trade-offs between the redistricting criteria and political goals. Thus, for most of the redistricting scenarios that **BARD** is intended to address, the available commercial automated redistricting software simply cannot be applied.

That these companies supply rudimentary automated features is perhaps unsurprising, since there is little *market* demand for automated functionality. Well-funded redistricting authorities and consultants are reticent to hand over highly sensitive political decisions to a machine. They have little incentive to use this functionality, since they can accomplish their ends without it, and it exposes them to potential legal complications since their optimization goals would be made clear. Although there is no money in it (and hence no market), public participation in the process will, however, be aided by these functions since they make it easier to draw plans that meet legal constraints and serve public goals.

## 6.2. New metaheuristic approaches

A more general optimization heuristic is needed to address the redistricting problem. To be adaptable to any reasonable redistricting goal, a successful approach should consider not only additions of single census blocks to a district core, but also arbitrary exchanges of multiple blocks among districts. To avoid being trapped in local optima, such a heuristic must be permitted to make some backwards (non-improving) steps in search of the global optimum, such as bridging two minority communities through a white community. These features of the redistricting problem suggest that *metaheuristics* may be an effective practical solution (see [Altman 1997](#); [di Cortona, Manzi, Pennisi, Ricca, and Simeone 1999](#); [Xiao 2003](#), for surveys of optimization algorithms used in redistricting).

Over the last two and a half decades, a set of new and surprisingly effective heuristic approaches to large optimization problems have arisen, including simulated annealing, evolutionary optimization (including genetic algorithms), iterated local search (including greedy randomized adaptive search), ant colony optimization, and tabu search. These approaches, although formulated independently, have now been recognized as belonging to a more general *metaheuristic* framework.

Essentially, metaheuristics are a general approach to optimization that involves combining a set of basic heuristics that find optima only in a local neighborhood with a larger framework for guiding and applying these heuristics repeatedly in a large search space (see [Blum and Roli 2003](#), for an in-depth survey of metaheuristics). Designing and applying metaheuristics requires dynamically balancing between *diversification* and *intensification*. Diversification involves generating new candidate solutions in such a way as to thoroughly explore the solution space. Intensification involves using (implicitly or explicitly) the history of candidate solutions that have been previously evaluated to guide the direction of an iterative search. Diversification is needed to have a high probability of finding the region of solutions that

contains an optimal solution and intensification is needed to find these solutions in a practical amount of time.

These metaheuristics have many variants and parameterizations, and none work well for all optimization problems (Wolpert and Macready 1997). This raises the possibility of ‘third-order’ bias, in which attributes of the outcome not specified in the optimization function may be affected in systematic ways by the solution method (Altman 1997). Finding the right solution approach for a particular domain of problems is a matter of craft as much as science. Although no single metaheuristic is guaranteed to be ideal, there are many reasons why the metaheuristic framework is an appropriate one to use for redistricting:

1. First, metaheuristics have a track record of being successful on difficult combinatoric optimization problems. Redistricting is an exemplar of such a problem – no sure solutions are available and no sure solutions are likely to be discovered due to the problem’s computational complexity.
2. Second, in experimental work metaheuristics are most successful for redistricting-like partitioning problems.
3. Third, metaheuristics do not assume *a-priori* a set of particular redistricting goals, or operationalization of them (although it is still likely that a particular configuration of selected metaheuristic is better at optimizing on one type of goal, such as compactness, than another, such as competitiveness). By using a general metaheuristic framework we can allow the redistricting plan’s author the flexibility to specify goals to be satisfied, rather than hard-coding the goals into the solution method.
4. Fourth, by using multiple metaheuristics to “solve” the same problem, we reduce the threat that a particular heuristic can systematically interact with a redistricting goal to bias the resulting plan.

### 6.3. Optimization methods in BARD

The initial version of **BARD** includes four metaheuristics:

*Simulated Annealing* (see citations above) exploits an analogy between the way in which molten metal freezes into a minimum energy crystalline structure (the annealing process) and the search for a function optimum. At each iteration, simulated annealing randomly generates a candidate point (or set of points) within a local neighborhood of the current solution. The probability of moving from the current solution to one of the candidate points is a function of both the difference in the value of the objective function at each point, and a temperature parameter. At high temperatures, candidate points that are “worse” than the current solution can be selected as the solution in the next iterate. This helps the heuristic to avoid a local optimum. At each iteration, the temperature is reduced gradually, so that the probability of heading downhill becomes vanishingly small.

*Genetic Algorithms* (see citations above) are a form of heuristic inspired by analogies between optimization (and adaptation) and the evolution of competing genes. In a genetic algorithm, a population set of candidate solutions are supplied to the optimization problem. Each solution is encoded as a string of values. At each iteration each member of the population is subject, at random, to mutation (an alteration of the solution vector), hybridization (a reshuffling

of subsequences between two solutions). In addition, each round undergoes selection, where some solutions are discarded and some are duplicated within the population, depending on the fitness (function evaluation) of that member.

*Tabu Search* (see [Glover 1986](#), and the citations above) modifies hill-climbing by retaining a memory of recent moves (or attributes thereof) and avoiding those moves unless they meet particular aspiration criteria. This use of memory encourages diversification.

*Greedy Randomized Adaptive Search* or GRASP ([Feo and Resende 1989](#)) is a multi-start metaheuristic. Each iteration involves two phases, generation of a random starting candidate solution, and greedy exploration of the search neighborhood (hill-climbing) to find a local optimum. GRASP iterates repeatedly, and returns the best solution across all iterations.

Greedy algorithms, when applied to redistricting problems, almost inevitably become trapped at a local optimum. The performance of such heuristics performance is thus quite sensitive to starting values. This is true even for metaheuristics unless the researcher is lucky, adapts the heuristic to the particular problem successfully, or uses external knowledge to pick starting values in the correct basin of attraction for the global optimum. Solving difficult optimization problems, however, is as much an art as a science.

A problem’s difficulty is increased when trying to optimize on multiple constraints, for example equal population and contiguity. A solution that scores well on equal population may have difficulty improving districts to create a plan with contiguous districts. When a plan has near equal population, but is not contiguous, the rearrangement of blocks to create a contiguous plan may first require large negative steps on equal population before population re-balancing can resume to produce a plan that is both contiguous and has equal population.

The proceeding example suggests that the size of the local neighborhood being searched at each iteration affects optimization performance. Sometimes an algorithm must take large steps to escape a local optimum’s basin of attraction. For example, a simulated annealing algorithm that considers only a single trade of census blocks among districts at each iteration may become trapped in a local optima more easily than one that considers trades of two or more blocks at a time. However, considering local neighborhoods induced by multiple rather than single trades makes these neighborhoods much larger, and more difficult or impossible to search thoroughly (ruling out some forms of greedy heuristic, for example.)

Selecting good starting values makes it much easier for metaheuristics to yield improved plans. In practice, when one starts with a current legal plan, it is much faster to generate a new, better-scoring plan than when starting from entirely randomly generated districts. A potential problem with using the former districts as a starting point is that the same political motivations that predominate the district shapes may continue to influence the solution.

## 7. Plan refinement, sampling, and profiling

This simple demonstration shows how **BARD** can be used to repeatedly generate and refine plans by applying one optimization algorithm to a set of 21 plans: a plan generated by k-means plus 20 plans generated by `createRandomPlan`. Each plan is then refined using the score function and optimization function indicated:

```
R> myScore <- function(plan, ...) combinedynamicScores(plan,
+               scorefuncs = list(calcPopScore, calcLWCompactScore))
```

```
R> samples <- samplePlans(list(kplan), score.fun = myScore,
+   ngenplans = 20, gen.fun = "createRandomPlan", refine.fun = "refineNelderPlan",
+   refine.args = list(maxit = 200, dynamicscoring = TRUE))
```

This yields a set of improved plans, which can be summarized and plotted using methods that the package supplies for evaluating *groups* of plans. **BARD** also supplies a `profilePlans` function that replicates `samplePlans`, while reweighting components of a given score function. This allows one to examine the effects of trade-offs among pairs of redistricting criteria.

```
R> plot(summary(samples))
```

The output is shown in Figure 5.

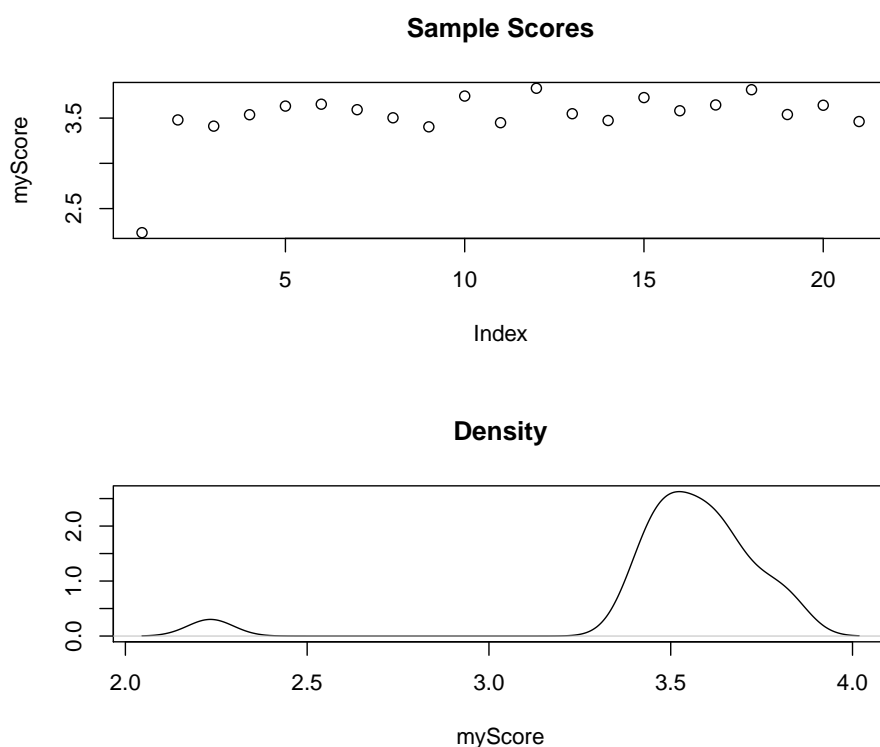


Figure 5: Plotting a distribution of “samples” randomly generated districts

Although redistricting is a computational problem that is too difficult to ensure the resulting plan is *optimal*, the program may yield a useful improvement over the starting map and may further enable the public to generate constitutionally viable plans.<sup>17</sup>

A unique aspect of **BARD**’s approach is that it enables one to explore the tradeoffs between redistricting goals, such as the de-minimis population inequality effect and district compactness, the creation of an additional majority-minority district, the number of partisan seats and

<sup>17</sup>To keep the run-time of this demonstration manageable, we implement the essential profiling steps using a quick but primitive optimization method, `refineNelderPlan`. In a real (and long running) application we would substitute `refineTabuPlan`, `refineAnnealPlan`, `refineGRASPplan`, or `refineGenoudPlan` for `refineNelderPlan` above.

district competitiveness, and compactness. We can repeatedly generate plans using the same set of redistricting goals, while systematically changing the weight given to one (or more) of those goals. For example, if plans generated using a scoring rule that weights compactness heavily have significantly fewer minority districts than plans generated with a lower weight on compactness, this suggests a tradeoff exists between compactness and minority representation.

A variant of this technique can be applied to reveal the preferences of those who created a districting plan. Informally, if we start with a redistricting plan chosen by a set of participants and show that a small modification to this plan has a large impact on a particular goal without much affecting other relevant criteria, we can infer that the plan’s author places a relatively low value on that goal. For example, if a more competitive plan can be produced at the expense of a small degree of compactness, while keeping the plan the same in all other relevant ways, then we have reason to believe that the plan’s author valued compactness over competitiveness.

Courts and litigants have used this approach informally, especially in the absence of smoking gun evidence, when they examine characteristics of plans that were rejected to illuminate why a particular plan was accepted. For example, it has been used by academics to assess intent in North Carolina’s redistricting in the 1990s ([Gronke and Wilson 1999](#)). Using automated redistricting it is possible to systematize this method – and **BARD** facilitates this.

Formally, this technique based on a fundamental axiom in economics, the weak axiom of revealed preference (WARP) ([Samuelson 1948](#)). Any method to infer preferences from the actions of a rational actor must rest on WARP. WARP states that if one observes a choice

$$\{a\}$$

from a set

$$\{a, b, c\}$$

then it must be the case that

$$a \geq b, a \geq c$$

To illustrate with a simple example, WARP implies that if I like chocolate ice cream over vanilla and strawberry, I will choose chocolate when presented with either a choice between chocolate and vanilla or chocolate and strawberry.

In a redistricting context, if plans  $a$  and  $b$  are available, but plan  $a$  is chosen, then it must be that plan  $a$  is weakly preferred. Using this method to reject competing hypotheses does *not* require the distributional assumptions that limit sampling heuristics. WARP is deterministic: the probability that  $b > a$  when  $a$  is chosen, equals zero.<sup>18</sup>

Computationally-intensive district generation techniques can reveal intent using WARP. An optimization algorithm can map out the space of local optimum of a value function that captures all relevant redistricting goals. For example, if there exists a plan that contains one more minority districts than an adopted map, and there is no difference in terms of other geographic and political goals, then maximization of minority districts was not a goal of a redistricting authority.

---

<sup>18</sup>Any method for inferring intent must assume some weak collective rationality of a redistricting authority such as a legislature – that what is intended is also what is chosen. If this assumption is violated, and the preferred plan is not the one chosen (at least probabilistically), then any attempt to infer intent is futile.

To be interpreted as revealing *preference* rather than simply *opportunity*, the redistricting authority must be reasonably aware of the existence of an alternative map. In some states, maps revealed through public submission phases of a redistricting process can help chart a redistricting authority’s preference structure. (**BARD** may thus provide a means of charting out a redistricting authority’s preference structure where public plan submissions are permitted by actually submitting maps generated by the program). Where public submissions are not permitted, optimization from the starting point of the adopted map may reveal if there was an easily discoverable district configuration that would have improved a map on a given criterion under study. **BARD**’s advantage over other statistical methods of analyzing plan choice is that they assume a districting authority was aware of, and had a choice over, the *entire distribution* of plans, whereas **BARD** requires only that the redistricting authority was reasonable aware of their discoverable choices.

There are two further limitations to this approach. First, the components of the scoring function should represent plausible explanations of the goals of the redistricting process in the political context being analyzed: like any other statistical test, a set of reasonable causal hypotheses must be a starting point. Second, like any other analytic method, its effectiveness will depend on how informative the data is. In some cases it may fail to reject any of the competing hypotheses, and one may need to obtain more data, such as other plans that were under consideration.

## 8. Efficiency in implementation and design

Because of the computational intensity of plan refinement methods, performance is an important consideration in the design and implementation of **BARD**. **BARD** uses a number of techniques to improve performance and facilitate large-scale problem computation at different levels of computation: data structures, computing scores, refining individual plans, and generating sets of plans for sampling and profiling.

### 8.1. Data structures

**BARD** employs the **maptools** (Lewin-Koh and Bivand 2011) data structures for storing geographic maps, in combination with a standard data frame for related variables such as population, and political composition of census blocks. To determine contiguity and compactness, **BARD** requires an adjacency graph. A standard distance matrix requires excessive amounts of memory, so **BARD** uses the **spdep** (Bivand 2011) package’s neighborhood list structure and methods. Our benchmarks determined that creating subsets of neighborhood lists was quite slow, and thus the implementation of score functions took some care to avoid generating such subsets.

Redistricting plans are represented as simple integer vectors with attributes identifying the number of districts and the related geographic map and data frame. However, although R supports copy-on-write for its objects, we found a significant amount of experimentation and care was necessary in order to avoid unnecessary duplication of redistricting plan objects. (See the appendix for details.)

## 8.2. Performance tuning

The performance of score functions is critical, since almost all of the other phases of **BARD** analysis (such as reporting, refinement, and sampling) repeatedly call these functions. Each of these scoring functions has been subject to benchmark testing (`Rprof` and `Rprofmem` are particularly useful in this respect) and tuning in R, where performance is poor. Two scoring functions, both geographical, were found to be surprisingly inefficient in R, and recoded in C, which improved performance by a factor of ten or better.

Moreover, each of the built-in score functions provided in **BARD** is designed to permit dynamic updating. Each accepts the previous score, and a list of changed block assignments, and will return an updated score. At a minimum, this information is used to determine which districts changed, and a recalculation is performed only for those districts. Some scoring functions, such as the population deviation function, provide further performance improvements by conducting only partial recalculations for the districts affected.

Dynamic scores rely on having the previous score evaluation passed back to the score function. When manually creating weighted scores that combine multiple dynamic scores, extra care should be taken to pass arguments back to each component score function.

In addition, combinations of scores should weight components in order to guarantee that legally required criteria (constraints) always dominate legally optional criteria. Since all score functions are standardized to produce values in  $[0,1]$ , this is easily accomplished by setting the weight for each required constraint so that:

$$\forall j \in \text{required}, w_j > \left( \text{number of districts} * \sum_{i \notin \text{required}} w_i \right)$$

The following combination score function illustrates a straightforward approach to these issues:

```
R> myCombinedS <- function(plan, lastscore = NULL, ...) {
+   plast <- NULL
+   ctlast <- NULL
+   if (!is.null(lastscore)) {
+     plast <- attr(lastscore, "plast")
+     ctlast <- attr(lastscore, "ctlast")
+   }
+   pscore <- calcPopScore(plan, lastscore = plast, ...)
+   ctscore <- calcContiguityScore(plan, lastscore = ctlast,
+     ...)
+   combined <- exp(ctscore) * attr(plan, "ndists") *
+     2 + exp(pscore)
+   attr(combined, "plast") <- pscore
+   attr(combined, "ctlast") <- ctscore
+   return(combined)
+ }
```

In most cases it will be unnecessary, however to write functions like those above manually: To minimize the housekeeping of creating composite dynamic score functions, **BARD** provides a wrapper function, `combinedDynamicScores`, that facilitates the combination of multiple score

functions.

Between the score function and the optimization heuristic, **BARD** inserts a dynamically generated function wrapper (analogous to a “factory” pattern in more typically object-oriented language). This wrapper encapsulates the score function interfaces that are exposed to the refinement heuristic and provides a set of automatic facilities for encapsulation and performance enhancement. These facilities detect and take advantage of dynamic score capabilities in the score function, implement a score cache, provide optional bounds checking on candidate plans generated by the chosen optimizer, and provide real-time graphical updates for use in demos and diagnostics. This factory wrapper is transparent to both score functions and optimization heuristics, allowing optimizers such as `optim()` and `genoud()` (using the `rgenoud` (Mebane and Sekhon 2011)) to be used “out of the box”.

Dynamic scoring is particularly useful for trajectory-based optimization heuristics such as simulated annealing, hill-climbing (the “greedy” refinement method), and GRASP. **BARD**’s implementation of the score factory automatically detects when dynamic scoring is supported by the scoring function and makes use of it within whichever optimization heuristic calls it. Population-based heuristics, such as genetic algorithms, are less likely to benefit from dynamic scoring, so dynamic scoring is not used by default in **BARD**’s genetic algorithm refinement heuristic.

A score caching mechanism avoids the need to recalculate scores on recently visited candidate plans. This is useful for population and trajectory-based optimization heuristics, although not useful for strictly greedy methods (since no plan is ever revisited by these methods). **BARD**’s score factory wrapper makes use of the history mechanism transparent to both the score function and the optimization heuristic. For memory efficiency, the history mechanism stores digests (using `digest` Eddelbuettel (2009)) of the plans visited, rather than complete plans.

Each plan refinement heuristic is also adapted for application to redistricting. The details of these adaptations are particular to each heuristic, but generally include: adjusting heuristic stopping criteria based on plan size, adjusting optimization-specific tuning parameters (such as temperature in annealing and population size in the genetic algorithm) based on plan characteristics, and providing customized candidate/neighborhood generation functions (such as the candidate function for the annealing method in `optim`).

### 8.3. Scalability

To support scaling out to larger problems, **BARD** supports the use of clusters of distributed computers for plan sampling, and GRASP refinement. The `refineGRASPplan`, `samplePlans`, and `profilePlans` functions will distribute instances of plan generation and refinement runs across a cluster. This allows for effective parallelization across hundreds of nodes with very little communications overhead. (In addition the `genoud` based genetic algorithm refinement function can use a cluster, however, because the parallelization for this function is implemented at the score level, communication overhead is much higher.)

**BARD** uses the `snow` (Rossini, Tierney, and Li 2007) framework to distribute work across compute clusters. This package encapsulates parallelization behind a set of interfaces that are similar to `lapply`, that take the computing cluster object as an extra parameter. (Also, a module-specific closure is used to store the current cluster object, avoiding the need to pass the cluster parameter in most cases.) Snow clusters can use **MPI**, **PVM** or raw sockets for

communication.

Internally, **BARD** further encapsulates the `snow lapply` functions behind the `lapplyBardCluster` function. (Where very large data structures are involved, such as maps, we also found it worthwhile to pre-stage the distribution of these data structures to the distributed compute nodes, and explicitly manage references to these data structures.) This encapsulation function discovers the configured cluster (avoiding the need to send additional parameters through the calling chains); unifies the multiple `snow` functions for using different types of scheduling of work; automatically retries any failed jobs (since socket-based clusters appeared to be particularly unreliable in some environments); and automatically falls back to local execution if distributed execution is unavailable or unsuccessful. The result is that other **BARD** modules can substitute this function for `lapply` and instantly make use of fault-tolerant parallelization whenever a cluster is available, without any other changes to implementation.

## 9. Future developments

**BARD** has recently been released to the public. While **BARD** offers a unique set of redistricting features, and serves as a usable framework for developing objective functions and redistricting algorithms, we envision extensions of it.

The redistricting process is complex; some might say “arcane.” While **BARD** lowers the barrier to entering the redistricting process significantly, the learning curve remains steep. Users still must have experience in interpreting census and election data and knowledge of R. (While **BARD** offers some nascent interactive functionality, this is limited.) Integration of **BARD** into an existing GIS system could significantly enhance ease of use for non-experts. For novice users, interface features such as “wizards”, accompanied by extensive help, and training examples would be valuable, and we expect to develop these interfaces in the future.<sup>19</sup>

While **BARD** supplies the most common evaluation criteria for redistricting, there are many variations in formulas for computing compactness, and many variations of other criteria across political jurisdictions. We plan to release more score function options and encourage those who write score functions that can be used with **BARD** to share them.

Finally, while we have paid careful attention to efficiency in algorithms and implementation (as described above), plan refinement, sampling and profiling remains very computationally intensive. We have had moderate success with moderate size plans. Since redistricting is a provably computationally-complex problem and thus not amenable to a general, exact solution, it is practically certain that the metaheuristics used in **BARD** can be further refined and supplemented to increase the size of plans that can be refined in practice, and to efficiently employ more complex evaluation criteria.

## 10. Summary

**BARD** is the first and (at the time of writing) only open-source system for general map drawing and redistricting analysis. While the first version of **BARD** was released in September, 2007 the package offers capabilities unavailable even in high-end commercial systems. It is the

---

<sup>19</sup>In addition, although **BARD** accepts data in the standard statistical and GIS formats, novices may have difficulty assembling redistricting data, which must be merged from several institutional sources.

only publicly available (commercial or non-commercial) software that performs multi-criteria optimization on redistricting plans, allowing a user to specify a formula that includes more than one variable. Furthermore, while many articles in political science and political geography have presented analyses based on automated redistricting techniques, no tools that support such methods have previously been made publicly available. **BARD** provides tools supporting a range of analytic methods including simulation of legal constraints on redistricting, “random”ized redistricting analysis, and automated exposure of revealed preference.

The **BARD** package provides those interested in creating or evaluating redistricting plans with a complete set of tools to read maps and data, display plans and edit them. Users can evaluate plans on a range of redistricting criteria and compare them to other competing redistricting plans.

The **BARD** package runs on Windows, Linux, and MacOS, and can be obtained from the project web site <http://bard.sf.net> and from the Comprehensive R Archive Network (CRAN) at <http://CRAN.R-project.org/package=BARD>.

## Acknowledgments

We thank Simon Jackman, Mike Margolis, Max Tsvetovat, Achim Zeileis for their comments and recommendations on the paper; Roger Bivand, Kurt Hornik, and Brian Ripley for their comments on the package; and Mark Rouleau for research assistance and programming. We also thank the Joyce Foundation and Sloan Foundation for financial support.

## References

- Aerts JC, Eisinger E, Heuvelink GB, Stewart TJ (2003). “Using Linear Integer Programming for Multi-Site Land-Use Allocation.” *Geographical Analysis*, **35**(2), 148–69.
- Altman M (1997). “Is Automation the Answer: The Computational Complexity of Automated Redistricting.” *Rutgers Computer and Law Technology Journal*, **23**(1), 81–141.
- Altman M (1998a). *Districting Principles and Democratic Representation*. Ph.D. thesis, California Institute of Technology, Pasadena, California.
- Altman M (1998b). “Modeling the Effect of Mandatory District Compactness on Partisan Gerrymanders.” *Political Geography*, **17**(8), 989–1012.
- Altman M, MacDonald K, McDonald MP (2005). “From Crayons to Computers: The Evolution of Computer Use in Redistricting.” *Social Science Computer Review*, **23**(3), 334–346.
- Altman M, McDonald MP (2004). “A Computation-Intensive Method for Evaluating Intent in Redistricting.” Presented at the annual meeting of the Midwest Political Science Association, URL <http://maltman.hmdc.harvard.edu/papers/dividing.pdf>.
- Altman M, McDonald MP (2011). “**BARD**: Better Automated Redistricting.” *Journal of Statistical Software*, **42**(4), 1–28. URL <http://www.jstatsoft.org/v42/i04>.

- Balinski ML, Young HP (2001). *Fair Representation: Meeting the Ideal of One Man, One Vote*. Brookings Institution Press, Washington, D.C.
- Bivand R (2011). *spdep: Spatial Dependence: Weighting Schemes, Statistics and Models*. R package version 0.5-31, URL <http://CRAN.R-project.org/package=spdep>.
- Blum C, Roli A (2003). “Metaheuristics in Combinatorial Optimization.” *ACM Computing Surveys*, **35**(3), 268–308.
- Cain B, Donald KM, McDonald MP (2006). “From Equality to Fairness: The Path of Political Reform Since Baker v. Carr.” In B Cain, T Mann (eds.), “Party Lines,” Brookings Institution Press.
- Cirincione C, Darling T, O’Rourke T (2000). “Assessing South Carolina’s 1990’s Congressional Districting.” *Political Geography*, **19**, 189–211.
- di Cortona PG, Manzi C, Pennisi A, Ricca F, Simeone B (1999). *Evaluation and Optimization of Electoral Systems*. SIAM Press, Philadelphia.
- Eddelbuettel D (2009). *digest: Create cryptographic hash digests of R objects*. R package version 0.4.2, URL <http://CRAN.R-project.org/package=digest>.
- Engstrom R, Wildgen J (1977). “Pruning Thorns from the Thicket: An Empirical Test of the Existence of Racial Gerrymandering.” *Legislative Studies Quarterly*, **4**, 465–479.
- Feo T, Resende M (1989). “A Probabilistic Heuristic for a Computationally Difficult Set Covering Problem.” *Operations Research Letters*, **8**, 67–71.
- Forest B (2004). “Information Sovereignty and GIS: the Evolution of ‘Communities of Interest’ in Political Redistricting.” *Political Geography*, **23**, 425–451.
- Gelman A, King G (1994). “A Unified Method of Evaluating Electoral Systems and Redistricting Plans.” *American Journal of Political Science*, **38**, 513–54.
- Glover F (1986). “Future Paths for Integer Programming and Links to Artificial Intelligence.” *Computers and Operations Research*, **13**, 533–549.
- Grofman B (1982). “For Single Member Districts Random is Not Equal.” In B Grofman, A Lijphart, R McKay, H Scarrow (eds.), “Representation and Redistricting Issues,” Lexington Books.
- Grofman B, Handley L, Niemi R (1992). *Minority Representation and the Quest for Voting Equality*. Cambridge University Press.
- Gronke P, Wilson J (1999). “Competing Redistricting Plans as Evidence of Political Motives.” *American Politics Quarterly*, **27**(2), 147–76.
- Gudgin G, Taylor PJ (1979). *Seats, Votes, and the Spatial Organization of Elections*. Pion Limited.
- Jenkins MA, Shepherd JW (1973). “Decentralizing High School Administration in Detroit: A computer Evaluation of Alternative Strategies of Political Control.” *Economic Geography*, **48**, 95–106.

- Johnson DS (1982). “The NP-Completeness Column: An Ongoing Guide.” *Journal of Algorithms*, **3**, 182–195.
- King G, Palmquist B, Adams G, Altman M, Benoit K, Gay C, Mayer R, Reinhardt E (1997). “The Record of American Democracy, 1984-1990.” *Technical Report 23623*, ICPSR.
- Knuth D (1997). *The Art of Computer Programming: Seminumerical Algorithms*. Addison Wesley, 2nd edition.
- Lewin-Koh NJ, Bivand R (2011). *maptools: Tools for Reading and Handling Spatial Objects*. R package version 0.8-6, URL <http://CRAN.R-project.org/package=maptools>.
- McDonald MP (2004). “Comparative Analysis of United States Redistricting Institutions.” *State Politics and Policy Quarterly*, **4**(4), 371–96.
- McDonald MP (2006). “Redistricting and District Competition.” In MP McDonald, J Samples (eds.), “The Marketplace of Democracy: Electoral Competition in American Politics,” Brookings Institution Press.
- Mebane Jr WR, Sekhon JS (2011). “Genetic Optimization Using Derivatives: The **rge-noud** Package for R.” *Journal of Statistical Software*. Forthcoming, URL <http://www.jstatsoft.org/>.
- Nagel SS (1965). “Simplified Bipartisan Computer Redistricting.” *The Stanford Law Review*, **17**, 863–869.
- Niemi R, Grofman B, Carlucci C, Hofeller T (1991). “Measuring Compactness and the Role of a Compactness Standard in a Test for Partisan and Racial Gerrymandering.” *Journal of Politics*, **53**, 1155–1179.
- Niemi RG, Deegan John J (1978). “A Theory of Political Districting.” *The American Political Science Review*, **72**(4), 1304–1323.
- O’Loughlin J (1982). “The Identification and Evaluation of Racial Gerrymandering.” *The Annals of the Association of American Geographers*, **70**, 353–70.
- Parker FR (1990). *Black Votes Count*. University of North Carolina Press.
- R Development Core Team (2011). *R: A Language and Environment for Statistical Computing*. R Foundation for Statistical Computing, Vienna, Austria. ISBN 3-900051-07-0, URL <http://www.R-project.org/>.
- Rogerson PA, Yang Z (1999). “The Effects of Spatial Population Distributions and Political Districting on Minority Populations.” *Social Science Computer Review*, **17**(1).
- Rossini A, Tierney L, Li N (2007). “Simple Parallel Statistical Computing in R.” *Journal of Computational and Graphical Statistics*, **16**(2), 399–420.
- Rossiter D, Johnston RJ (1981). “Program **GROUP**: the Identification of all Possible Solutions to a Constituency-Delimitation Problem.” *Environment and Planning*, **13**, 231–8.
- Samuelson PA (1948). “Consumption Theory in Terms of Revealed Preference.” *Econometrica*, **15**, 243–253.

Tufte ER (1973). “The Relationship between Seats and Votes in Two-Party Systems.” *The American Political Science Review*, **67**(2), 540–554.

Vickrey W (1961). “On the Prevention of Gerrymandering.” *Political Science quarterly*, **76**, 105–110.

Weaver JB, Hess SW (1963). “A Procedure for Nonpartisan Districting: Development of Computer Techniques.” *The Yale Law Journal*, **72**(2), 288–308.

Wolpert D, Macready W (1997). “No Free Lunch Theorems for Optimization.” *IEEE Transactions on Evolutionary Computation*, **1**(1), 67–82.

Xiao N (2003). *Geographical Optimization using Evolutionary Algorithms*. Ph.D. thesis, University of Iowa.

Xiao N (2006). “An Evolutionary Algorithm for Site Search Problems.” *Geographical Analysis*, **38**, 227–47.

## A. Memory Management Details

As noted above, additional care in the implementation of **BARD** is needed to avoid making copies of large objects. A particular issue is the assignment of large objects as attributes of other objects. This occurs when redistricting plans contain a reference to the underlying map object on which they are based. We develop the idiom of wrapping these objects in an `environment` and assign this environment as an attribute, which proves successful at avoiding duplication of these large data structure. We further develop a special-purpose “shallow” concatenate operator, which is used to concatenate multiple lists of large objects. This avoids memory duplication which would normally occur when using the `c()` operator.

This shallow copy function is illustrated below:

```
R> cs <- function(...) {
+   mc <- substitute(list(...))
+   if (length(mc) == 0) {
+     return(list())
+   }
+   listlength <- 0
+   for (i in seq(from = 2, length.out = length(mc) -
+     1)) {
+     listlength <- listlength + length(eval.parent(mc[[i]]))
+   }
+   lastpos <- 0
+   retval <- vector(length = listlength, mode = "list")
+   for (i in seq(from = 2, length.out = length(mc) -
+     1)) {
+     tmp <- eval.parent(mc[[i]])
+     for (j in seq(from = 1, length.out = length(tmp))) {
+       retval[lastpos + j] <- tmp[j]
+     }
+     lastpos <- lastpos + length(tmp)
+   }
+   return(retval)
+ }
```

### Affiliation:

Micah Altman  
 Institute for Quantitative Social Science  
 Harvard University  
 1737 Cambridge Street, N325  
 Cambridge, MA, 02138.  
 United States of America  
 E-mail: [micah\\_altman@harvard.edu](mailto:micah_altman@harvard.edu)  
 URL: <http://maltman.hmdc.harvard.edu/>

Michael P. McDonald  
 George Mason University  
 4400 University Drive - 3F4  
 Fairfax, VA 22030-4444  
 E-mail: [mmcdon@gmu.edu](mailto:mmcdon@gmu.edu)  
 URL: <http://elections.gmu.edu/>